

AIRCADEMY



Part-FCL question bank

SPL

(Excerpt)

**Published sample
questions**

Publisher:

EDUCADEMY GmbH
info@aircademy.com

COPYRIGHT Notice:

This work is protected by copyright.

Commercial use of the work or extracts from the work in teaching and learning media is only permitted with the prior consent of the publishers. For enquiries, please contact the publishers.

Please note that this excerpt of the question catalogue contains only a part of the examination questions. Unknown tasks will also appear in the examination.

Revision & Quality Assurance

As part of the continuous revision and updating of the international question database for private pilots (ECQB-PPL), we are constantly looking for competent experts. If you are interested in working with us, please contact us by e-mail at experts@aircademy.com.

If you have any comments or suggestions regarding the content of the questionnaire, please send them to info@aircademy.com.

- 1 The "swiss cheese model" can be used to explain the...**
- A) optimal problem solution.
 - B) state of readiness of a pilot.
 - C) error chain.
 - D) procedure for an emergency landing.
- 2 What is the percentage of oxygen in the atmosphere at 6000 ft?**
- A) 18.9 %
 - B) 21 %
 - C) 78 %
 - D) 12 %
- 3 At which altitude is the atmospheric pressure approximately half the MSL value (1013 hPa)?**
- A) 22000 ft
 - B) 18000 ft
 - C) 5000 ft
 - D) 10000 ft
- 4 Which of the following is NOT a symptom of hyperventilation?**
- A) Tingling
 - B) Cyanose
 - C) Disturbance of consciousness
 - D) Spasm
- 5 Which of the following symptoms may indicate hypoxia?**
- A) Muscle cramps in the upper body area
 - B) Joint pain in knees and feet
 - C) Blue discolouration of lips and fingernails
 - D) Blue marks all over the body
- 6 From which altitude on does the body usually react to the decreasing atmospheric pressure?**
- A) 10000 feet
 - B) 12000 feet
 - C) 7000 feet
 - D) 2000 feet

- 7 What is the function of the red blood cells (erythrocytes)?**
- A) Oxygen transport
 - B) Blood sugar regulation
 - C) Immune defense
 - D) Blood coagulation
- 8 What is the function of the white blood cells (leucocytes)?**
- A) Blood coagulation
 - B) Immune defense
 - C) Oxygen transport
 - D) Blood sugar regulation
- 9 What is an appropriate reaction when a passenger during cruise flight suddenly feels uncomfortable?**
- A) Switch on the heater blower and provide thermal blankets
 - B) Adjust cabin temperature and prevent excessive bank
 - C) Give additional oxygen and avoid low load factors
 - D) Avoid conversation and choose a higher airspeed
- 10 What is the correct term for the system which, among others, controls breathing, digestion, and heart frequency?**
- A) Critical nervous system
 - B) Automatical nervous system
 - C) Compliant nervous system
 - D) Autonomic nervous system
- 11 What is the parallax error?**
- A) Wrong interpretation of instruments caused by the angle of vision
 - B) Misperception of speed during taxiing
 - C) Long-sightedness due to aging especially during night
 - D) A decoding error in communication between pilots
- 12 The connection between middle ear and nose and throat region is called...**
- A) inner ear.
 - B) eardrum.
 - C) cochlea.
 - D) eustachian tube.

- 13 Wings level after a longer period of turning can lead to the illusion of...**
- A) steady turning in the same direction as before.
 - B) starting a descent.
 - C) turning into the opposite direction.
 - D) starting a climb.
- 14 Which optical illusion might be caused by a runway with an upslope during the approach?**
- A) The pilot has the feeling that the approach is too high and therefore descends below the regular glide slope
 - B) The pilot has the feeling that the approach is too low and therefore approaches the runway above the regular glide slope
 - C) The pilot has the feeling that the approach is too fast and reduces the speed below the normal approach speed
 - D) The pilot has the feeling that the approach is too slow and speeds up above the normal approach speed
- 15 The occurrence of a vertigo is most likely when moving the head...**
- A) during a straight horizontal flight.
 - B) during a descent.
 - C) during a climb.
 - D) during a turn.
- 16 Visual illusions are mostly caused by...**
- A) misinterpretation of the brain.
 - B) binocular vision.
 - C) rapid eye movements.
 - D) colour blindness.
- 17 The average decrease of blood alcohol level for an adult in one hour is approximately...**
- A) 0.1 percent.
 - B) 0.3 percent.
 - C) 0.03 percent.
 - D) 0.01 percent.
- 18 What condition may give rise to diabetes?**
- A) Sleep deficiency
 - B) Overweight
 - C) Smoking
 - D) Sunbathing

19 A risk factor for decompression sickness is...

- A) sports.
- B) 100 % oxygen after decompression.
- C) smoking.
- D) scuba diving prior to flight.

20 Which statement is correct with regard to the short-term memory?

- A) It can store 7 (± 2) items for 10 to 20 seconds
- B) It can store 10 (± 5) items for 30 to 60 seconds
- C) It can store 3 (± 1) items for 5 to 10 seconds
- D) It can store 5 (± 2) items for 1 to 2 minutes

21 What is a latent error?

- A) An error which remains undetected in the system for a long time
- B) An error which is made by the pilot actively and consciously
- C) An error which only has consequences after landing
- D) An error which has an immediate effect on the controls

22 The ongoing process to monitor the current flight situation is called...

- A) constant flight check.
- B) anticipatory check procedure.
- C) situational thinking.
- D) situational awareness.

23 Regarding the communication model, how can the use of the same code during radio communication be ensured?

- A) By a particular frequency allocation
- B) By the use of proper headsets
- C) By the use of radio phraseology
- D) By using radios certified for aviation use only

24 Which factor can lead to human error?

- A) The bias to see what we expect to see
- B) Proper use of checklists
- C) To be doubtful if something looks unclear or ambiguous
- D) Double check of relevant actions

25 What is the best combination of traits with respect to the individual attitude and behaviour for a pilot?

- A) Extroverted - stable
- B) Introverted - stable
- C) Introverted - unstable
- D) Extroverted - unstable

26 Complacency is a risk due to...

- A) the high error rate of technical systems.
- B) better training options for young pilots.
- C) increased cockpit automation.
- D) the high number of mistakes normally made by humans.

27 The ideal level of arousal is at which point in the diagram?

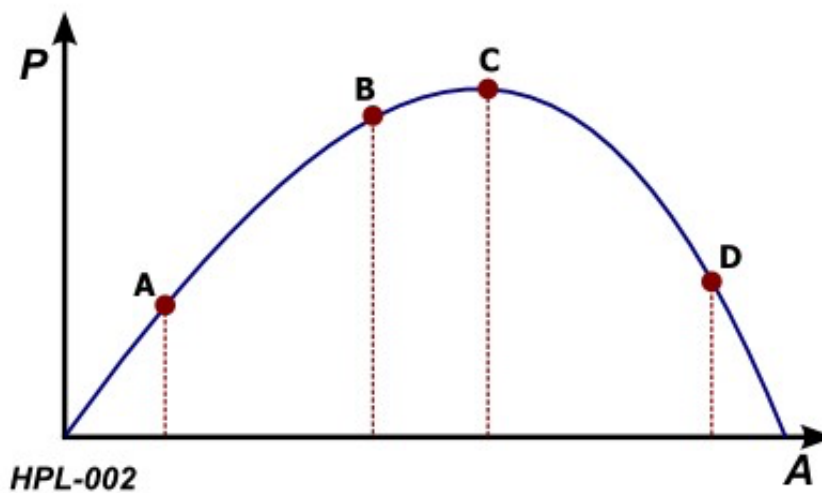
See figure (HPL- 002)

P = Performance

A = Arousal / Stress

Please pay attention to annex 1

- A) Point B
- B) Point C
- C) Point A
- D) Point D



28 At which point in the diagram will a pilot find himself to be overstrained?

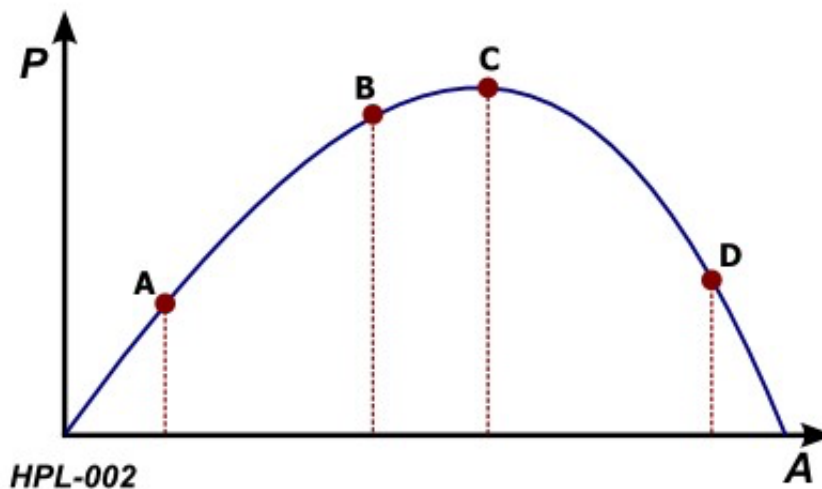
See figure (HPL-002)

P = Performance

A = Arousal / Stress

Please pay attention to annex 1

- A) Point D
- B) Point A
- C) Point C
- D) Point B



29 Which answer is correct concerning stress?

- A) Stress can occur if there seems to be no solution for a given problem
- B) Training and experience have no influence on the occurrence of stress
- C) Stress and its different symptoms are irrelevant for flight safety
- D) Everybody reacts to stress in the same manner

30 During flight you have to solve a problem, how to you proceed?

- A) Solve problem immediately, otherwise refer to the operating handbook
- B) Contact other pilot via radio for help, keep flying
- C) There is no time for solving problems during flight
- D) Primarily fly the airplane and keep it stable, then attend to the problem and keep flying the airplane

Annex 1

