

AIRCADEMY



Part-FCL question bank

BPL

(Excerpt)

**Published sample
questions**

Publisher:

EDUCADEMY GmbH
info@aircademy.com

COPYRIGHT Notice:

This work is protected by copyright.

Commercial use of the work or extracts from the work in teaching and learning media is only permitted with the prior consent of the publishers. For enquiries, please contact the publishers.

Please note that this excerpt of the question catalogue contains only a part of the examination questions. Unknown tasks will also appear in the examination.

Revision & Quality Assurance

As part of the continuous revision and updating of the international question database for private pilots (ECQB-PPL), we are constantly looking for competent experts. If you are interested in working with us, please contact us by e-mail at experts@aircademy.com.

If you have any comments or suggestions regarding the content of the questionnaire, please send them to info@aircademy.com.

20.3.1 Human Factor typ:MC 1 E20-200511-00001 28.01.2022 Pts.: 1,00

1 The majority of aviation accidents are caused by...

- A) geographical influences.
- B) meteorological influences.
- C) technical failure.
- D) human error.

20.3.2 Cockpit Management typ:MC 2 E20-200511-00006 17.01.2022 Pts.: 1,00

2 The "swiss cheese model" can be used to explain the...

- A) procedure for an emergency landing.
- B) optimal problem solution.
- C) state of readiness of a pilot.
- D) error chain.

20.1.1 Basic Principles typ:MC 4 E20-200511-00009 17.01.2022 Pts.: 1,00

3 What is the percentage of oxygen in the atmosphere at 6000 ft?

- A) 21 %
- B) 78 %
- C) 12 %
- D) 18.9 %

20.1.4 Physical Impacts of Flight typ:MC 7 E20-200511-00013 17.01.2022 Pts.: 1,00

4 At which altitude is the atmospheric pressure approximately half the MSL value (1013 hPa)?

- A) 10000 ft
- B) 22000 ft
- C) 18000 ft
- D) 5000 ft

20.1.1 Basic Principles typ:MC 8 E20-200511-00014 28.04.2021 Pts.: 1,00

5 Air consists of oxygen, nitrogen and other gases.

What is the approximate percentage of other gases?

- A) 0.1 %
- B) 21 %
- C) 78 %
- D) 1 %

20.1.2 Oxygen and Blood Circulation typ:MC 24 E20-200511-00021 17.01.2022 Pts.: 1,00

6 Which of the following symptoms may indicate hypoxia?

- A) Muscle cramps in the upper body area
- B) Blue marks all over the body
- C) Blue discolouration of lips and fingernails
- D) Joint pain in knees and feet

20.1.2 Oxygen and Blood Circulation typ:MC 25 E20-200511-00022 28.04.2021 Pts.: 1,00

7 Which of the human senses is most influenced by hypoxia?

- A) The olfactory perception (smell)
- B) The auditory perception (hearing)
- C) The visual perception (vision)
- D) The tactile perception (sense of touch)

20.1.2 Oxygen and Blood Circulation typ:MC 18 E20-200511-00026 17.01.2022 Pts.: 1,00

8 What is the function of the red blood cells (erythrocytes)?

- A) Immune defense
- B) Oxygen transport
- C) Blood sugar regulation
- D) Blood coagulation

20.1 Flight Physiology typ:MC 51 E20-200511-00062 28.04.2021 Pts.: 1,00

9 Visual illusions are mostly caused by...

- A) binocular vision.
- B) rapid eye movements.
- C) misinterpretation of the brain.
- D) colour blindness.

20.3.1 Human Factor typ:MC 53 E20-200511-00065 17.01.2022 Pts.: 1,00

10 The average decrease of blood alcohol level for an adult in one hour is approximately...

- A) 0.3 percent.
- B) 0.03 percent.
- C) 0.1 percent.
- D) 0.01 percent.

20.1.4 Physical Impacts of Flight typ:MC 55 E20-200511-00068 17.01.2022 Pts.: 1,00

11 A risk factor for decompression sickness is...

- A) 100 % oxygen after decompression.
- B) scuba diving prior to flight.
- C) sports.
- D) smoking.

20.2.1 Information Processing typ:MC 58 E20-200511-00075 28.04.2021 Pts.: 1,00

12 For what approximate time period can the short-time memory store information?

- A) 35 to 50 seconds
- B) 30 to 40 seconds
- C) 3 to 7 seconds
- D) 10 to 20 seconds

20.2.1 Information Processing typ:MC 62 E20-200511-00080 17.01.2022 Pts.: 1,00

13 The ongoing process to monitor the current flight situation is called...

- A) situational thinking.
- B) constant flight check.
- C) situational awareness.
- D) anticipatory check procedure.

20.2.3 Personality typ:MC 67 E20-200511-00086 28.04.2021 Pts.: 1,00

14 Under which circumstances is it more likely to accept higher risks?

- A) If there is not enough information available
- B) During flight planning when excellent weather is forecast
- C) Due to group-dynamic effects
- D) During check flights due to a high level of nervousness

20.2.3 Personality typ:MC 70 E20-200511-00089 28.04.2021 Pts.: 1,00

15 What is an indication for a macho attitude?

- A) Risky flight maneuvers to impress spectators on ground
- B) Careful walkaround procedure
- C) Quick resignation in complex and critical situations
- D) Comprehensive risk assessment when faced with unfamiliar situations

20.2.3 Personality typ:MC 72 E20-200511-00091 17.01.2022 Pts.: 1,00

16 What is the best combination of traits with respect to the individual attitude and behaviour for a pilot?

- A) Extroverted - stable
- B) Extroverted - unstable
- C) Introverted - stable
- D) Introverted - unstable

17 The ideal level of arousal is at which point in the diagram?

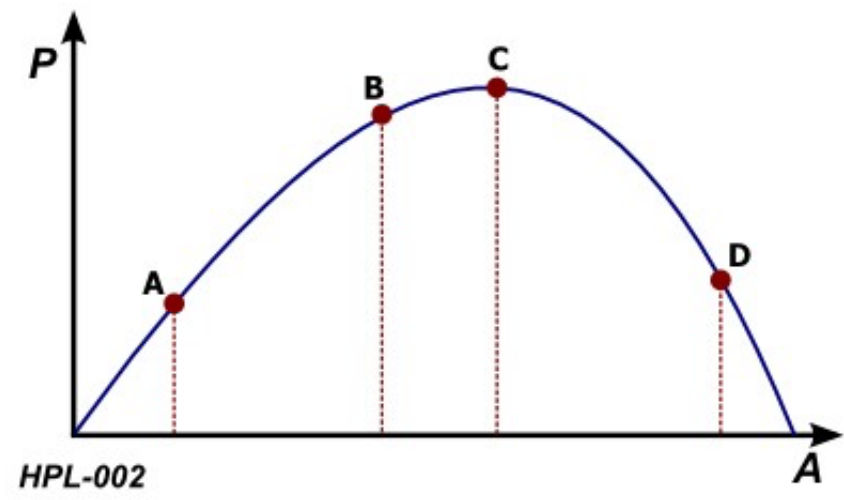
See figure (HPL- 002)

P = Performance

A = Arousal / Stress

Please pay attention to annex 1

- A) Point A
- B) Point C
- C) Point B
- D) Point D



18 Which of the following qualities are influenced by stress?

1. Attention
2. Concentration
3. Responsiveness
4. Memory

- A) 1, 2, 3
- B) 1
- C) 1, 2, 3, 4
- D) 2, 4

Annex 1

