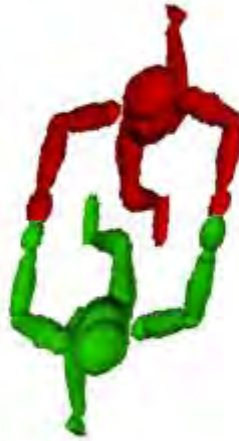


A

STAR



both head down; double arm grip

B

FLOWER



both head down; arm to foot grip; right arm on right foot

C

JORA



One head down – one head up; head down has a double arm to foot grip

D

SITLINE



Both head up; arm to arm grip; left arm to right arm

E TUCANO

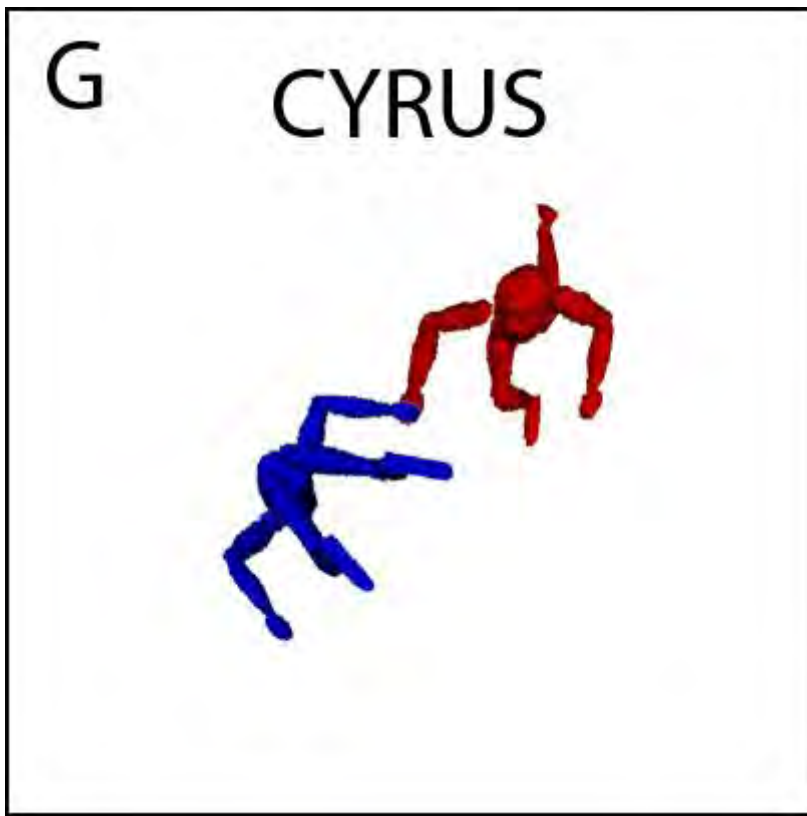


Both head down; arm to arm grip; right arm on right arm or left arm on left arm

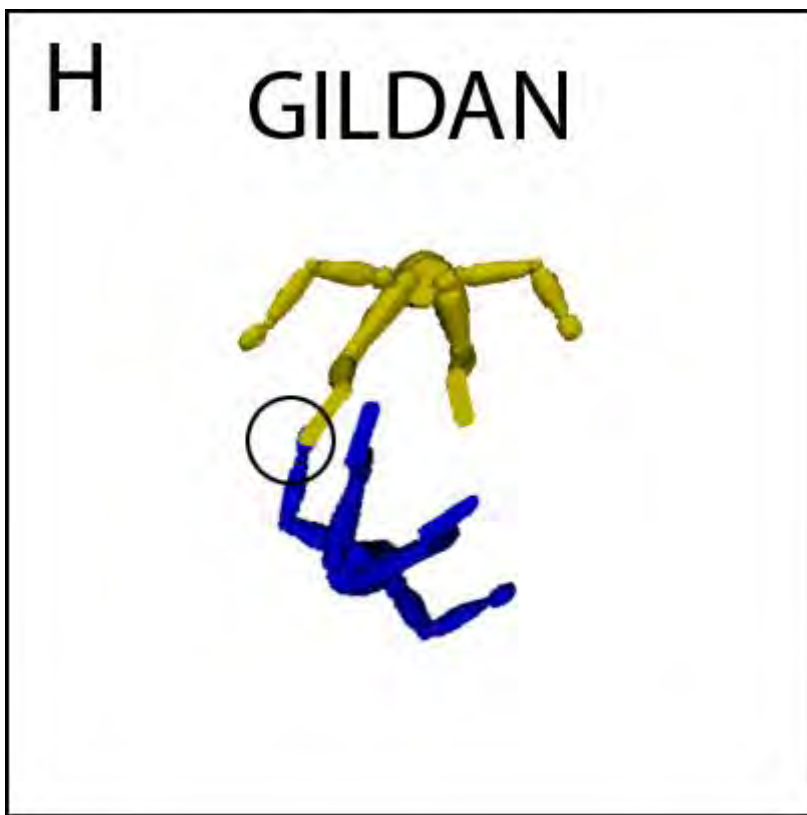
F JOKER



One head down – one head up; arm to arm grip; left arm on right arm



One head down – one head up; arm to arm grip; right arm on right arm or left arm on left arm



Both head up; arm to foot grip; right arm on left foot or left arm on right foot

I

RIXER



One head down – one head up; double arm grip

J

X-BIRD



One head down – one head up; arm to foot grip; left hand on right foot or right hand on left foot

K

CROSS



Both head down; arm to arm grip; left arm on right arm

L

CRISS-CROSS



Both head down; arm to arm grip; right arm on right arm or left arm on left arm